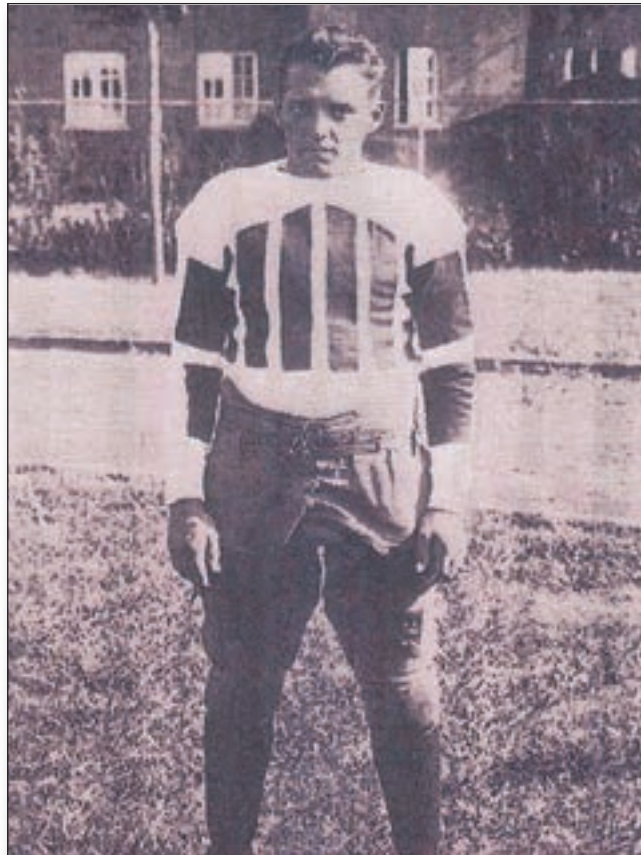


DONALD SANFORD

DONALD WAS BORN AND RAISED IN PARRISH, ALABAMA, where he followed in the footsteps of his uncle Bruce Jones, a member of the “Half Century All-Time Great Players at the University of Alabama.” Donald started every game in his career at Parrish where he played for coach Edward Childs. His senior year, they amassed a record of 11-2-1 beating Birmingham powerhouse Woodlawn 13-6 in a game played at Legion Field. He signed to play football at the University of Alabama where he was destined to find greatness.



Donald was a three year letterman who played for both Wallace Wade and Frank Thomas at Alabama. He played on the Crimson Tide’s last Southern Conference Championship team (1930). Donald was key figure in Wade’s last game at Alabama where he anchored the offensive line in Bama’s 24-0 win over Washington State in the 1931 Rose Bowl which clinched Bama’s 10-0 season and gave the Tide their fourth National Championship.

While at the University of Alabama, he played with some of the all-time great players such as: Don Hutson, Dixie Howell, Johnny Cain, and Fred Sington.

Donald came back to Walker County in 1947 as an assistant football coach and head basketball coach for the Walker County High School Vikings. He then took over the reigns as the head coach of the football team for the 1948-49 seasons.

He had the unique opportunity to obtain the authentic football from the 1931 Rose Bowl victory which became a family heirloom and is still in the possession of the family today.